



13/5 Croydon Street Petersham, NSW



2



1



1

Ideal Inner West Living

Open For Inspection - Saturday CANCELLED

Located on a gracious tree lined street, surrounded by grand heritage homes, this ultra private apartment in a tightly held boutique development is a rare find. An attractive entry level leads into a very appealing central courtyard with water feature and glass framed lift to the upper floors.

Council Rates: \$316.00 p/q

Water Rates: \$178.00 p/q

Strata Rates: \$1,259.00 p/q

Internal area: 73 sqms internally approx

Parking Area & Cage: 15 sqms approx

Total area: 88 sqms approx

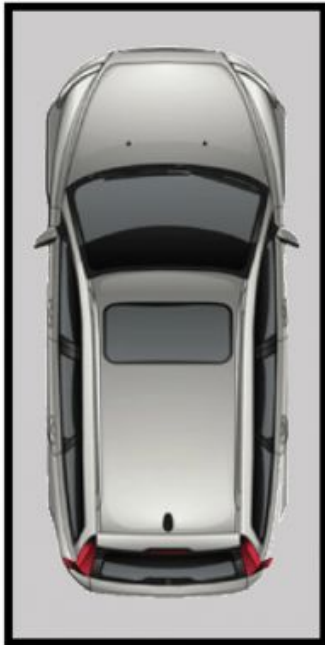
Rosalie Gordon

0416 198 261

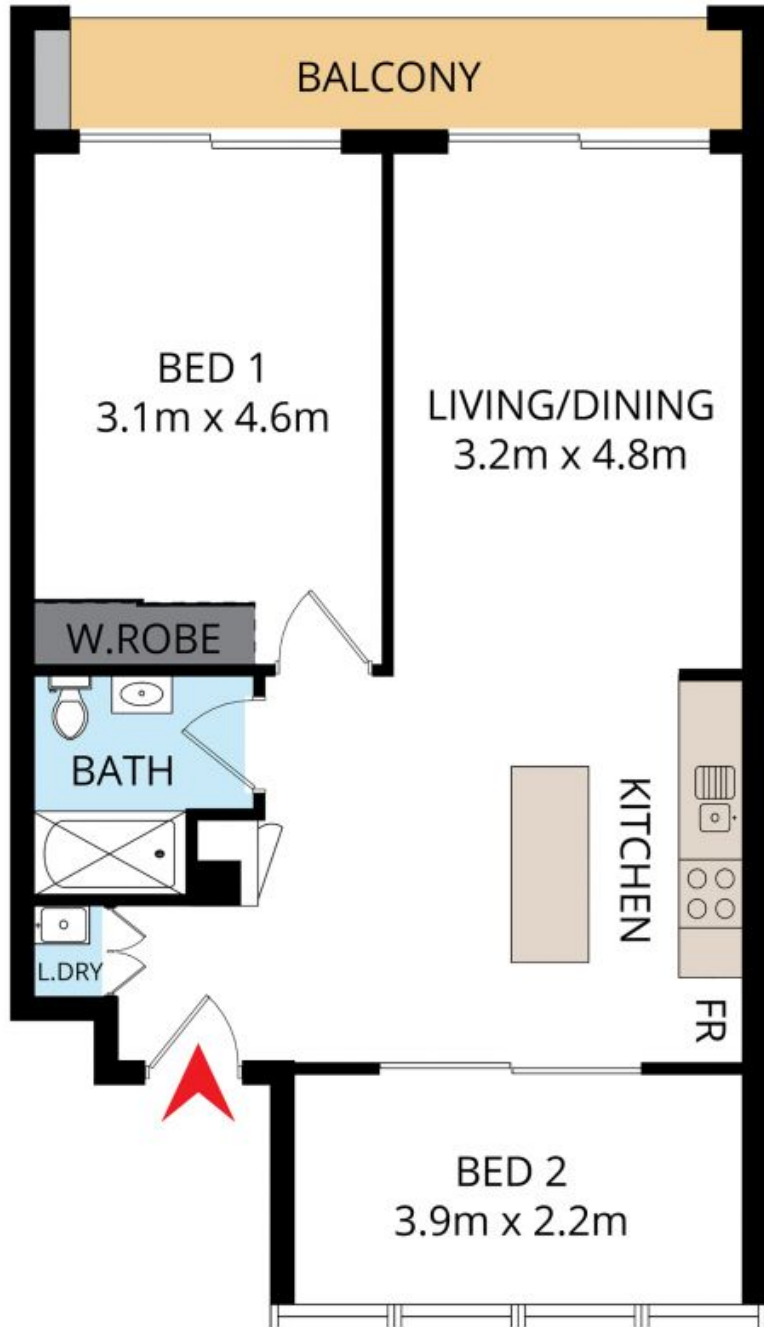
Mark Gordon

0414 797 779

STORAGE CAGE
2sqm



UNDERCOVER
CARSPACE
13sqm



DISCLAIMER: THIS IS FOR ILLUSTRATIVE PURPOSES ONLY.
ALL DIMENSIONS ARE APPROXIMATE AND IT DOES NOT
CONSTITUTE PART OF ANY LEGAL DOCUMENTS.

ADDRESS:

13/5 Croydon Street



Petersham, NSW

13/5 Croydon Street
FLOORPLAN BY www.sosphotography.com.au