



97/23 Norton Street Leichhardt, NSW



2



2



1

Modern Lifestyle Living
UNDER OFFER- INSPECTION CANCELLED

Total Size: 106 sqm approximately

Council Rates: \$310.00 per quarter (approximately)

Water Rates: \$150.84 per quarter (approximately)

Strata Levies: \$1,399.63 per quarter (approximately)

Council Rates: \$310.00 p/q

Water Rates: \$150.84 p/q

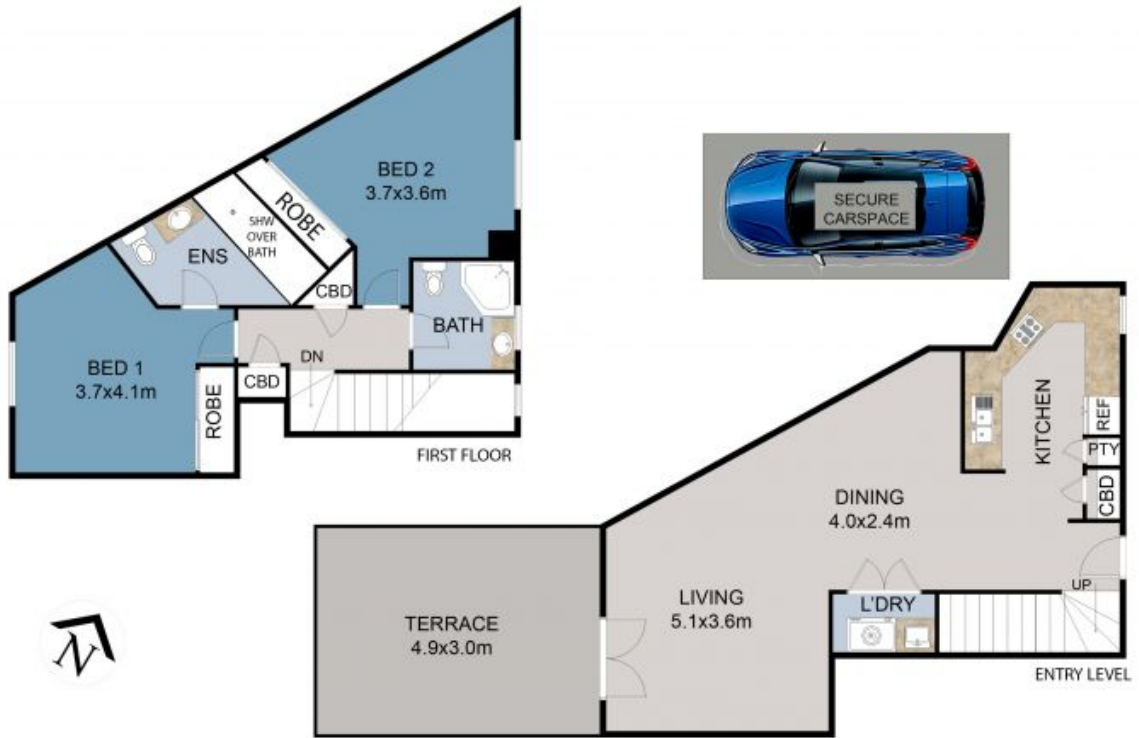
Strata Rates: \$1,399.63 p/q

Rosalie Gordon

0416 198 261

Mark Gordon

0414 797 779



<p>DISCLAIMER: THIS IS FOR ILLUSTRATIVE PURPOSES ONLY. ALL DIMENSIONS ARE APPROXIMATE AND IT DOES NOT CONSTITUTE PART OF ANY LEGAL DOCUMENTS.</p>	<p>ADDRESS: 97/23 NORTON STREET, LEICHHARDT</p>
---	---

FLOOR PLAN BY www.sosphotography.com.au



97/23 Norton Street

Leichhardt, NSW