



2 Wolli Avenue Earlwood NSW

4 🚗 3 🚗 2 🚗

Spectacular in scale and located for lifestyle excellence, this sophisticated contemporary residence is a triumph of style and space in a whisper quiet Earlwood locale. A showcase of design with an emphasis on easy family living, the perfectly thought-out floor plan reveals generous proportions and high-quality finishes, balanced with exceptional outdoor areas and ambience that reflect its vibrant surroundings.

Type : House
Price : \$ 2,300,000
Land Size : 645 sqm
View : <https://www.planetproperties.com.au/sale/nsw/inner-west/earlwood/residential/house/7380813>

- ? Four spacious bedrooms plus study, master with walk-in robe and ensuite with double shower and double bath
- ? Fully equipped gourmet Caesarstone kitchen, two Smeg ovens and induction cooktop, Miele semi-integrated dishwasher
- ? Three stylish modern bathrooms, two with separate shower and bath
- ? Sundrenched family living and dining overlooking the garden and parklands at rear
- ? Beautifully appointed lounge room with sunny northerly

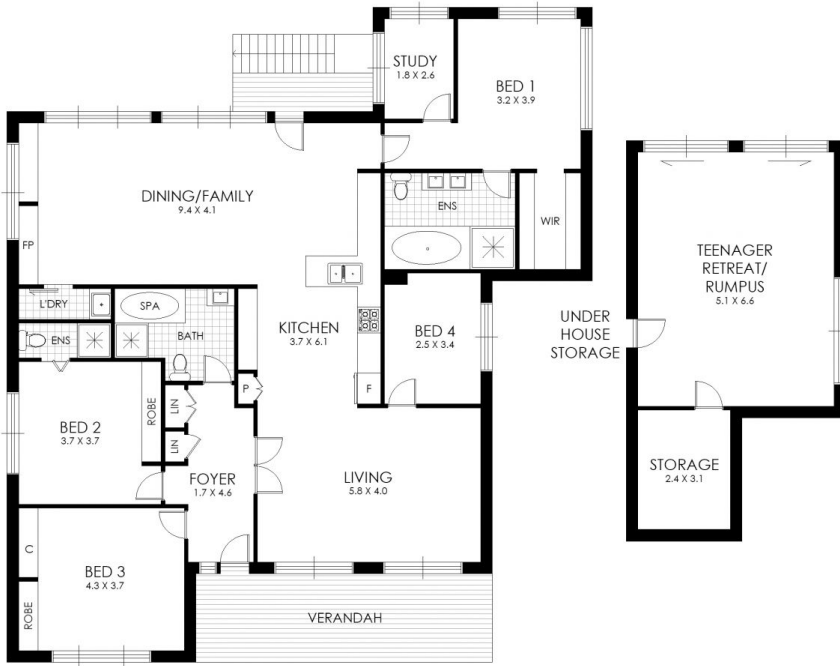


Rosalie Gordon
0416198261

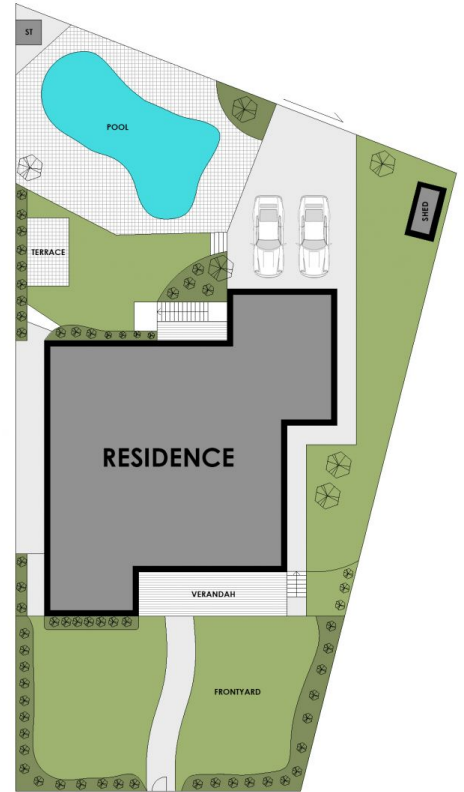


Mark Gordon
02 9747 8888

[For full version visit the website](https://www.planetproperties.com.au)



FLOOR PLAN



SITE PLAN

2 Wollie Avenue, Earlwood

WARNING: DISCLAIMER This information is not to be relied upon. It is strictly used for marketing and illustration purposes only. All measurements are approximate. Not to scale. No liability accepted. You must rely on your own inquiries and seek advice from your solicitor. Floor plan by cnkplan@cnkplan.com.au / www.cnkplan.com.au

