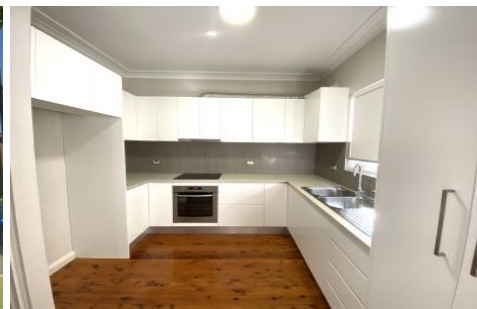


Streetscape



**3/148 Edwin Street North Croydon NSW**

**2  1 **

Unit 3 is on the ground level at the rear of the block and is located in a quiet cul-de-sac close to good schools, the Croydon Village shops, cafes and the train station.

**Type** : Unit

**View** : <https://www.planetproperties.com.au/lease/nsw/inner-west/croydon/residential/unit/7611132>

- \* 2 bedrooms, the main being particularly large with a huge built-in robe and timber floors
- \* Huge living/dining room with floor boards and door to balcony access
- \* Modern kitchen with ceramic cook top, s/s oven and spacious pantry
- \* Renovated bathroom
- \* Internal laundry

Features: Close to Croydon Train Station, floorboards throughout and lovely streetscape

Fabulous, handy location.

[For full version visit the website](#)



**Rita Gibson**  
02 9747 8888



**Claudine Cornall**  
02 9747 8888