

49 John Street Petersham NSW

4 2

Idyllically positioned in one of the suburbs finest locales, this double-fronted home's elaborate period details and exceptionally spacious dimensions provide immediate family appeal within 200 meters distance to Petersham's cafes, 650 meters to train station and 400 meters to Newington College. Set in lovely established garden surrounds, retaining its charming traditional attributes, including a classic iron and timber verandah, elaborate plaster details, and original timber fireplaces.

Four doubled bedrooms, master with sparkling ensuite (two with built-ins)

Modern kitchen features Caesarstone bench tops, soft close drawers, mirrored splashback, six-burner SMEG cooktop/oven and Miele dishwasher

Two stylish bathrooms, main with combined shower/bath & laundry facilities

Lovely light-filled open plan living area with bi-fold doors that open onto a manicured rear garden with covered entertaining deck

Price : \$ 2,800,000
Land Size : 335 sqm
View : <https://www.planetproperties.com.au/sale/nsw/inner-west/petersham/residential/house/7614879>



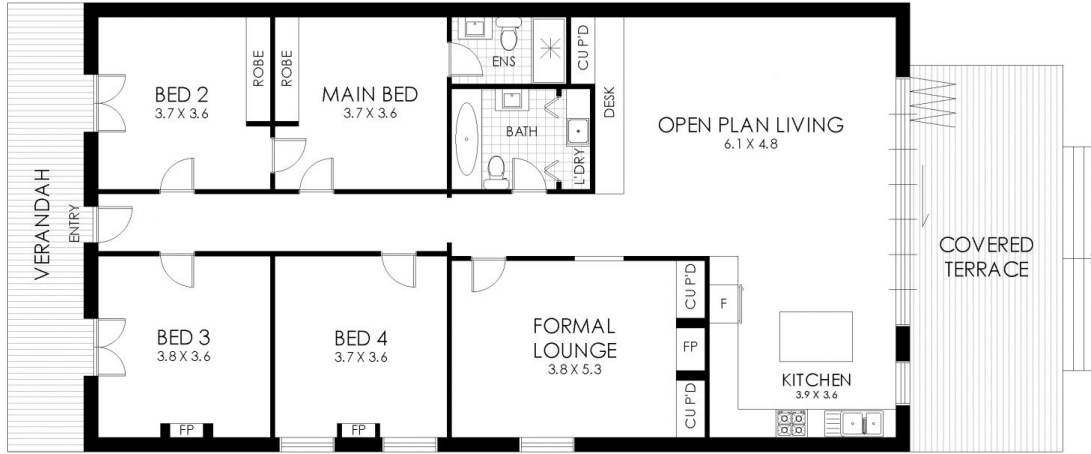
Rosalie Gordon
0416198261



Mark Gordon
02 9747 8888



SITE PLAN



FLOOR PLAN

49 John Street, Petersham

WARNING: DISCLAIMER This information is not to be relied upon. It is strictly used for marketing and illustration purposes only. All measurements are approximate. Not to scale. No liability accepted. You must rely on your own inquiries and seek advice from your solicitor. Floor plan by cnkplan@cnkplan.com.au/ www.cnkplan.com.au

