



12/300-306 Canterbury Road Canterbury NSW

1 🛏 1 🚿 1 🚗

Perfectly positioned on the top floor in this small stylish security building of 18 apartments. This oversized apartment provides easy modern living in a superbly central location. With a delightful northerly aspect and generous proportions, experience absolute comfort and convenience with refined finishes and an abundance of space (approximately 104 sqms in total)

Price : \$ 575,000
Building Size : 108 sqm
View : <https://www.planetproperties.com.au/sale/nsw/canterburybankstown/canterbury/residential/apartment/7766921>

- ? Sundrenched top floor north facing position
- ? Spacious combined lounge & dining room
- ? Modern stone topped kitchen with gas cooking
- ? Double bedroom with full width built-in robe
- ? Sparkling bathroom with combined shower & bath
- ? Large entertaining balcony bathed in natural light
- ? Security building with lift access
- ? Reverse cycle air conditioning & security undercover car space

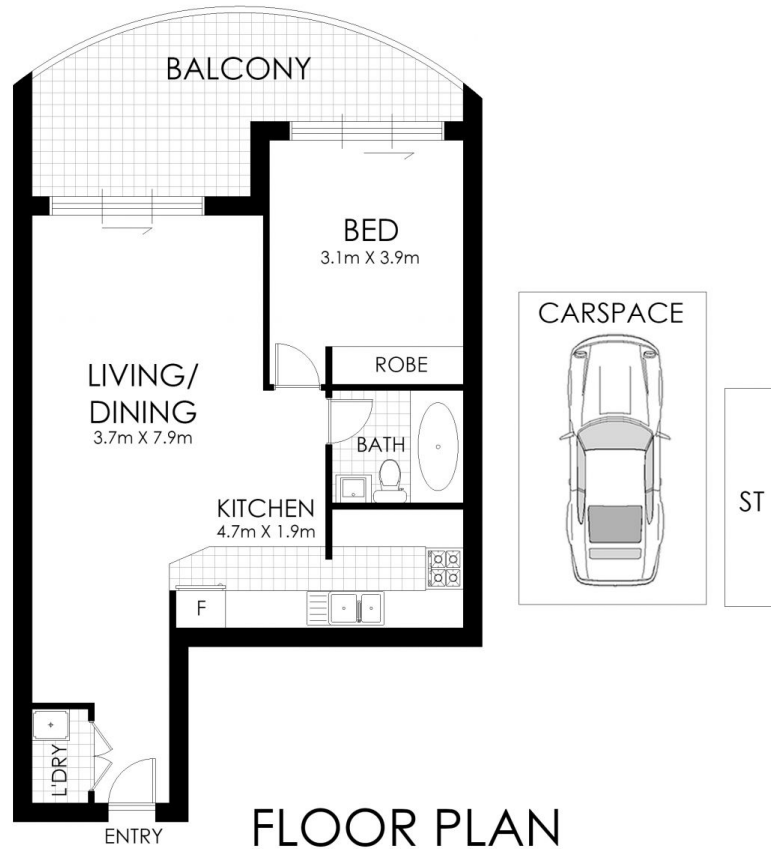


Rosalie Gordon
0416198261



Mark Gordon
02 9747 8888

Strata levies: 1067.90 per quarter
 Council Rates: \$401.50 per quarter
 Water Rates: \$180.38 per quarter



FLOOR PLAN

12/300-306 Canterbury Road, Canterbury

WARNING: DISCLAIMER This information is not to be relied upon. It is strictly used for marketing and illustration purposes only. All measurements are approximate. Not to scale. No liability accepted. You must rely on your own inquiries and seek advice from your solicitor. Floor plan by cnkplan@cnkplan.com.au/ www.cnkplan.com.au

