



6/430 Liverpool Road Croydon NSW

2 1 1

- ? Spacious top floor apartment situated to the rear of the building
- ? Two double bedrooms both with built ins
- ? Well equipped modern kitchen with gas cooking
- ? Sparkling bathroom with separate shower & bath
- ? Supremely spacious combined lounge & dining room
- ? Sundrenched private entertaining terrace
- ? Glowing polished floors, internal laundry & air conditioning
- ? Lock up garage with additional storage room

Total Size: Including garage & storage room 112sqms approximately

Council Rates: \$353.00 per quarter approximately
 Water Rates: \$180.38 per quarter plus usage
 Strata Levies: \$1,152.50 per quarter approximately
 ?

[For full version visit the website](https://www.planetproperties.com.au)

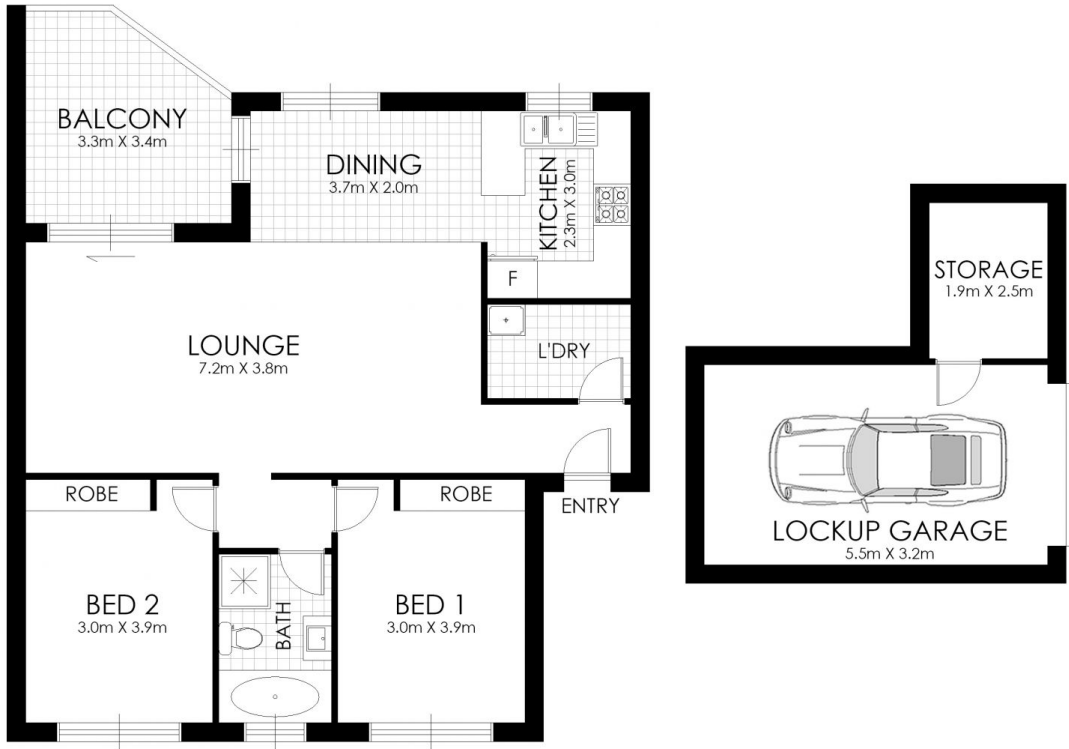
Type : Apartment
Price : \$ 785,000
Building Size : 112 sqm
View : <https://www.planetproperties.com.au/sale/nsw/inner-west/croydon/residential/apartment/7810874>



Rosalie Gordon
0416198261



Mark Gordon
02 9747 8888



FLOOR PLAN

6/430 Liverpool Road, Croydon

WARNING: DISCLAIMER This information is not to be relied upon. It is strictly used for marketing and illustration purposes only. All measurements are approximate. Not to scale. No liability accepted. You must rely on your own inquiries and seek advice from your solicitor. Floor plan by cnkplan@cnkplan.com.au/ www.cnkplan.com.au

