



1/3-5 Phillips Avenue Canterbury NSW

2 2 1

Introducing "Phillips on the Park" Residences, a unique collection of six limited edition luxury townhomes crafted to promote effortless living in the highly sought after and amenity rich locale of Canterbury. Architecturally inspiring with its clever use of materials, soaring ceilings and interpretation of space, this mix of two townhomes offers the finest in modern living adjacent to Tasker Park and the Cooks River.

Price : \$ 1,250,000

View : <https://www.planetproperties.com.au/sale/nsw/canburybankstown/canbury/residential/townhouse/7967926>

? 4 x two bedroom town homes with two bathrooms and single garages

? 2 x four bedroom town homes (one already sold) with 2.5 bathrooms and double garages

? Stunning fully equipped stone topped gourmet kitchens

? Beautifully appointed bedrooms with a choice of fitted and walk in robes

? Sundrenched dining & living rooms with cathedral ceilings

? Glamorous modern bathrooms with rain showers & baths

? Sliding glass doors leading to sundrenched private gardens

? Engineered parquetry floors & internal laundries

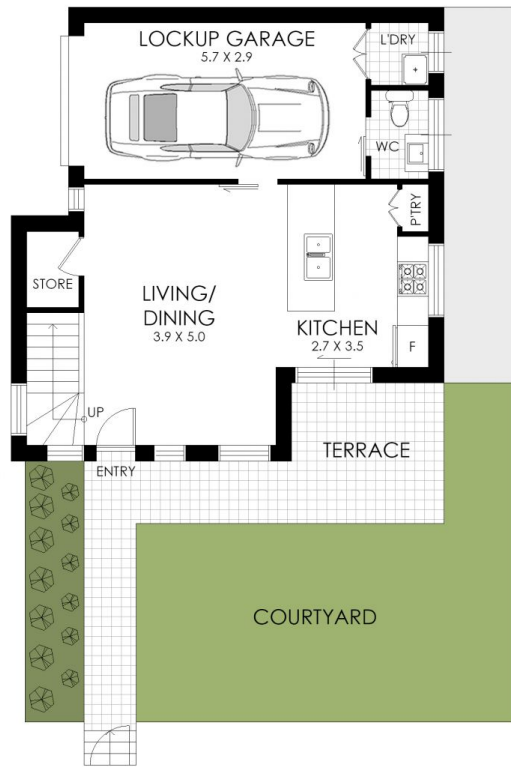
? Ducted air conditioning & solar power



Rosalie Gordon
0416198261



Mark Gordon
02 9747 8888



GROUND FLOOR



FIRST FLOOR

1/3-5 Phillips Avenue, Canterbury

WARNING: DISCLAIMER This information is not to be relied upon. It is strictly used for marketing and illustration purposes only. All measurements are approximate. Not to scale. No liability accepted. You must rely on your own inquiries and seek advice from your solicitor. Floor plan by cnkplan@cnkplan.com.au / www.cnkplan.com.au



GROUND LEVEL



UPPER LEVEL

5/3-5 Phillips Avenue, Canterbury

WARNING: DISCLAIMER This information is not to be relied upon. It is strictly used for marketing and illustration purposes only. All measurements are approximate. Not to scale. No liability accepted. You must rely on your own inquiries and seek advice from your solicitor. Floor plan by cnkplan@cnkplan.com.au / www.cnkplan.com.au

