



2/467-469 Liverpool Road Croydon NSW

3 🛏 1 🚗 2 🚗

Pristine presentation and crisp contemporary form combine beautifully amidst lush established gardens in this stunning elevated ground floor apartment. Luxuriously appointed and renovated to the highest standards this delightful apartment features cutting edge designer finishes and clean lines, delivering a sublime living environment.

Price : AUCTION
Building Size : 140 sqm
View : <https://www.planetproperties.com.au/sale/nsw/inner-west/croydon/residential/apartment/7983576>

- * Beautifully renovated spacious modern apartment
- * Three well appointed bedrooms all with built-ins
- * Fully equipped gourmet kitchen with pantry
- * Sleek modern bathroom with shower & separate spa
- * Elegant combined lounge & dining with entertaining terrace
- * Perfect presentation with quality inclusions throughout
- * Remote lock up garage/workshop & separate additional car space
- * 800 metres to Croydon Village cafes & public transport



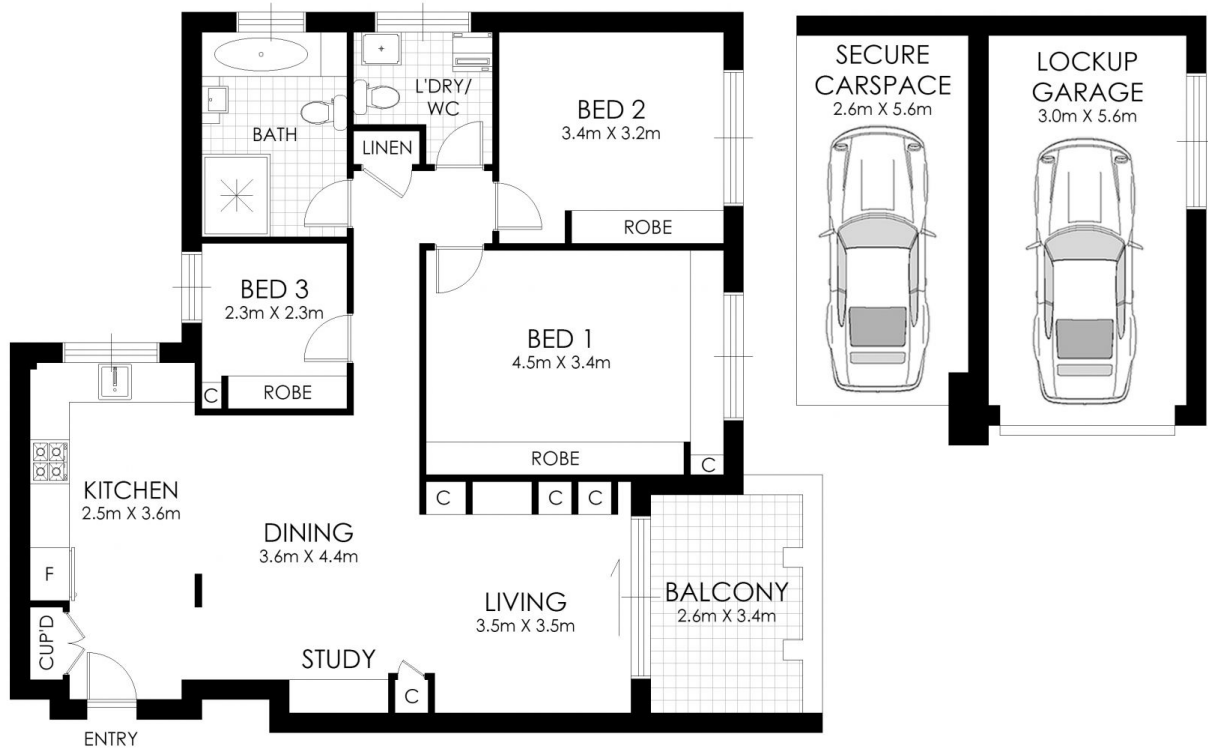
Rosalie Gordon
0416198261



Mark Gordon
02 9747 8888

Internal area: 108sqms approx
 Parking Area: 32sqms approx
 Total area 140sqms approx

Council Rates: \$353.00 per quarter approx



FLOOR PLAN

2/467-469 Liverpool Road, Croydon

WARNING: DISCLAIMER This information is not to be relied upon. It is strictly used for marketing and illustration purposes only. All measurements are approximate. Not to scale. No liability accepted. You must rely on your own inquiries and seek advice from your solicitor. Floor plan by cnkplan@cnkplan.com.au/ www.cnkplan.com.au

