



**17/389-391 Liverpool Road Strathfield NSW**

1 1 1

SATURDAY'S OPEN FOR INSPECTION IS CANCELLED.

Unit 17 is superbly located with bus transport at the front of the block. This unit is situated at the rear which makes it very quiet and peaceful and has it's own separate entry - no need to enter the block. Access is via High Street.

**Price** : DEPOSIT TAKEN \$550 pw

**View** : <https://www.planetproperties.com.au/lease/nsw/inner-west/strathfield/residential/apartment/7990824>

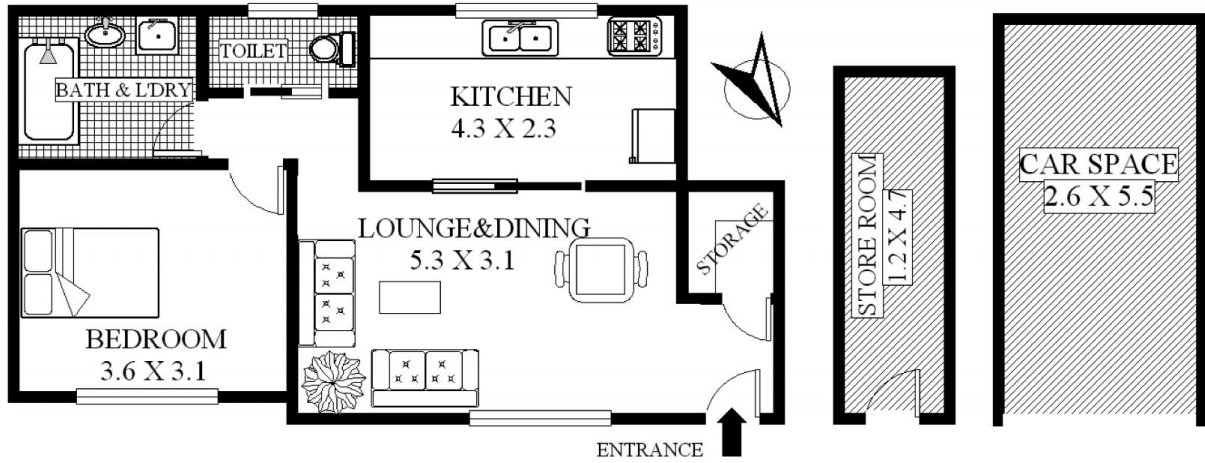
- ? Quietly set at the rear with separate entry
- ? Well equipped, spacious eat-in kitchen with ceramic cook top
- ? The living/dining room is east facing with a leafy aspect
- ? Light and airy bedroom with large built-in robe
- ? Combined bathroom/laundry with dryer and a separate WC
- ? Internal 54 sqm + car space and storage room, total: 72 sqm approx.
- ? Features: polished timber floors, extra internal storage, NBN ready



**Rita Gibson**  
02 9747 8888



**Jhi Cornall**  
0297478888



UNIT 17/389-391 LIVERPOOL RD  
STRATHFIELD

Disclaimer: Plans shown are for presentation purposes and are not part of any legal document. All measurements and figures are approximate.  
Floor Plans by **Jordan** mob:0410753215

