



**27 Perry Street Marrickville NSW**

4 2

In a blue ribbon position, footsteps to Enmore's boutique shops and restaurants, this grand Victorian terrace with an impressive six meter frontage combines classic character with tasteful updates and a cosmopolitan address. Charming interiors showcase enduring features of the period, with oversized eat-in kitchen and spacious living room flowing to a low maintenance private entertaining rear and side garden.

**Type** : House  
**Price** : Guide \$2.1 million  
**Land Size** : 225 sqm  
**View** : <https://www.planetproperties.com.au/sale/nsw/inner-west/marrickville/residential/house/8705794>

- ? Four well-appointed bedrooms, master with wrought iron terrace
- ? Formal lounge room with magnificent marble fireplace
- ? Spacious well equipped eat-in kitchen
- ? Two modern bathrooms one on each level
- ? Ducted air conditioning, period plaster ceilings & marble fireplace
- ? Polished timber floors & separate study/home office
- ? Sundrenched paved low maintenance rear & side garden
- ? Close to Enmore Park, cafes & public transport

Land Area: 225 sqms approximately

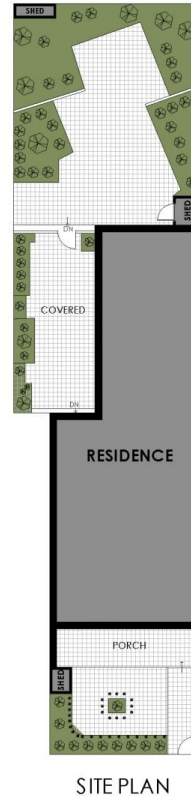
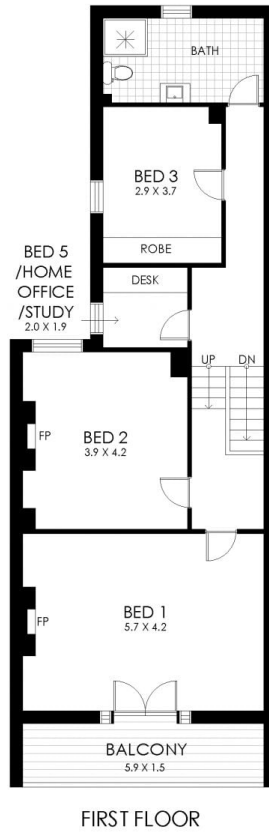
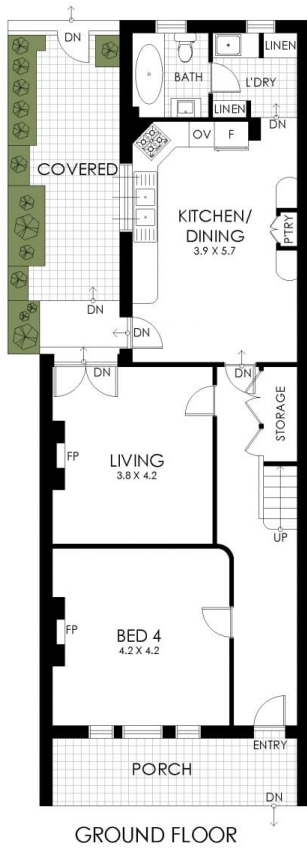
[For full version visit the website](#)



**Mark Gordon**  
02 9747 8888



**Rosalie Gordon**  
0416198261



## 27 Perry Street, Marrickville

**WARNING: DISCLAIMER** This information is not to be relied upon. It is strictly used for marketing and illustration purposes only. All measurements are approximate. Not to scale. No liability accepted. You must rely on your own inquiries and seek advice from your solicitor. Floor plan by [cnkplan@cnkplan.com.au](mailto:cnkplan@cnkplan.com.au) / [www.cnkplan.com.au](http://www.cnkplan.com.au)

